

## Darlington Transistors (Large-Signal TR)

Darlington transistors can be driven with less power. Darlington transistor-applied circuits can be simplified and made small-sized, facilitating assembly of sets.

Our Darlington transistors are available for  $I_c=0.7A$  (Small-Signal TR) to 15A and can be applied to various uses.

### Applications

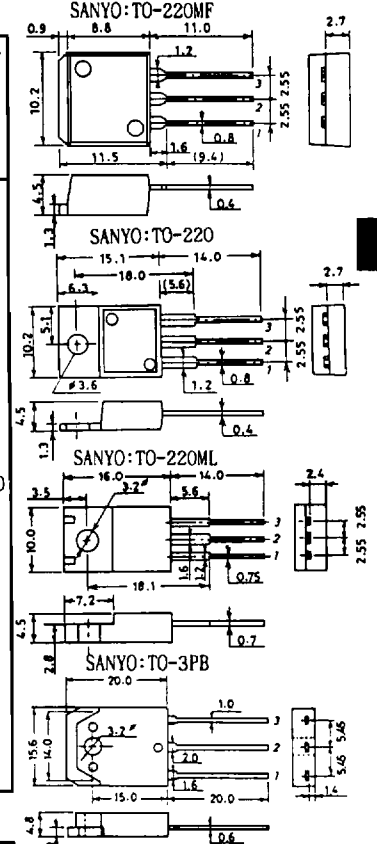
☆ECRs, printers, typewriters, sewing machines, recorders, computers, igniters, car coolers, projectors, players, stereos, home appliances, audio equipment, industrial equipment.

### VCEO 60V Series

For PNP, (-) sign is omitted. \*:  $T_c=25^\circ C$

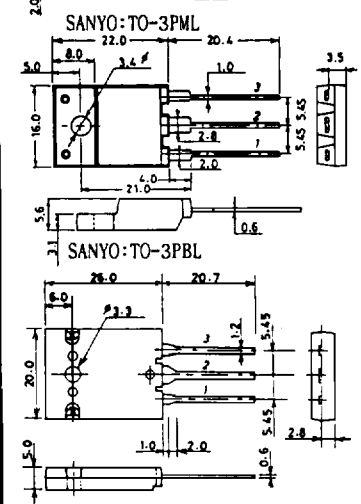
Type No.	Package	Absolute Maximum Ratings/ $T_a=25^\circ C$				Electrical Characteristics/ $T_a=25^\circ C$							Resistance R1/R2 ( $\Omega$ )
		$V_{CBO}$ (V)	$V_{CEO}$ (V)	$I_C$ (A)	$P_C$ *(W)	$V_{CE}$ (V)	$I_C$ (A)	$h_{FE}$ min	$I_C$ (A)	$I_B$ (mA)	$V_{CE(sat)}$ max (V)	$f_T$ typ (MHz)	
2SA1258/2SC3144	TO-220	70	60	3	20	2	1.5	2000	1.5	3	1.5	200	6000/200
2SB880/2SD1190				4	30		2		4	20			
2SA1259/2SC3145				5	30		2.5		5	200			
2SB881/2SD1191				7	35		3.5		7	20			
2SB882/2SD1192				10	40		5		10	20			
2SB1471/2SD2223	TO-220 MF	70	60	4	30	2	2	2000	2	4	1.5	20	6000/200
2SB1472/2SD2224				7	35		3.5		7	20			
2SB1223/2SD1825	TO-220 ML	70	60	4	20	2	2	2000	2	4	1.5	20	6000/200
2SB1224/2SD1826				7	25		3.5		7	20			
2SB1225/2SD1827				10	30		5		10	20			
2SB912/2SD1229	TO-3PB	70	60	10	60	2	5	2000	5	10	1.5	20	6000/200
2SB883/2SD1193				15	70		7		14	20			

Outlines (unit:mm)  
1: Base, 2: Collector, 3: Emitter

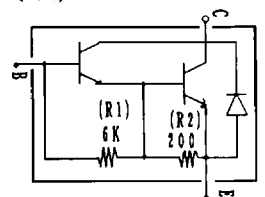


### VCEO 100V Series

2SD2048	TO-220 MF	110	100	3	30	3	1.5	1500	1.5	3	1.5	20	6000/200
2SD2049				5	35		2.5		5	20			
2SD2050				8	40		4		8	20			
2SB884/2SD1194	TO-220	110	100	3	30	3	1.5	1500	1.5	3	1.5	20	6000/200
2SB885/2SD1195				5	35		2.5		5	20			
2SB886/2SD1196	TO-220 ML	110	100	8	40	3	4	1500	4	8	1.5	20	6000/200
2SB1226/2SD1828				3	20		1.5		3	20			
2SB1227/2SD1829				5	25		2.5		5	20			
2SB1228/2SD1830	TO-3PB	110	100	8	30	3	4	1500	4	8	1.5	20	6000/200
2SB913/2SD1230				8	60		4		8	20			
2SB887/2SD1197	TO-3PBL	110	100	10	70	3	5	1500	5	10	1.5	20	6000/200
2SB1388/2SD2093				10	45		5		10	20			



Electrical connection (NPN)



### Induction Cookers Use

2SC3664	TO-3PB	800	400	20	150	5	20	80	20	1A	2	20	150/30
2SC4119	TO-3PBL	1500	800	15	250		15	25	15	0.75	3	6	

\* In addition to the above, the C-B Zener diode-contained Darlington TR, Small-Signal TR series are available.

These specifications are subject to change without notice.